

# MARS-810-190X2M-UV F02

## 8.1MP CMOS CXP2.0 Area Scan Camera



The MARS-810-190X2M-UV F02 camera is equipped with Sony IMX487 Global shutter CMOS sensor and uses CoaXPress interface for high-speed transmission of image data, featuring high quality images, low power consumption, high transmission speed, stable operating capability.

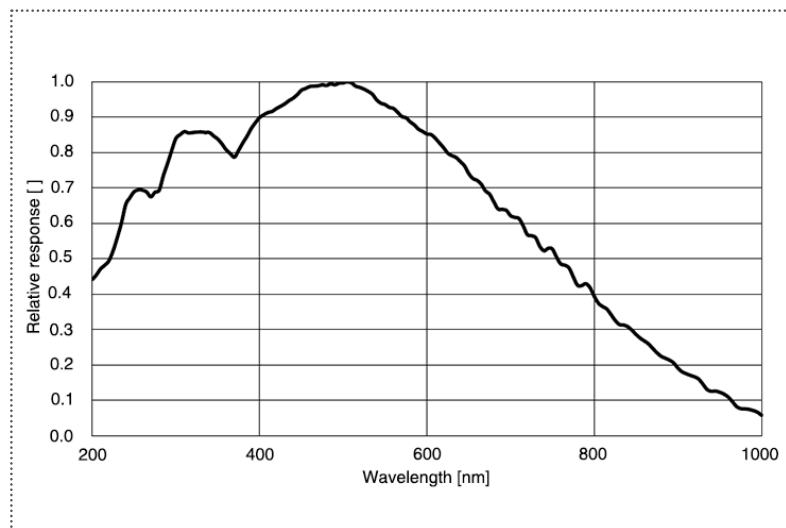
### Applications

Suitable for defect inspection, discharge inspection, recycle industry, printing industry, life science and so on.

### Features

- The Sequencer Control supports multiple sets of parameters configuration
- Brightness, Contrast, Gamma, Sharpness, Noise Reduction, Black Level, Timer, Counter, LUTs and User Set Control
- DAHENG IMAGING or third-party frame grabbers are available

### Spectral Response



## Specifications

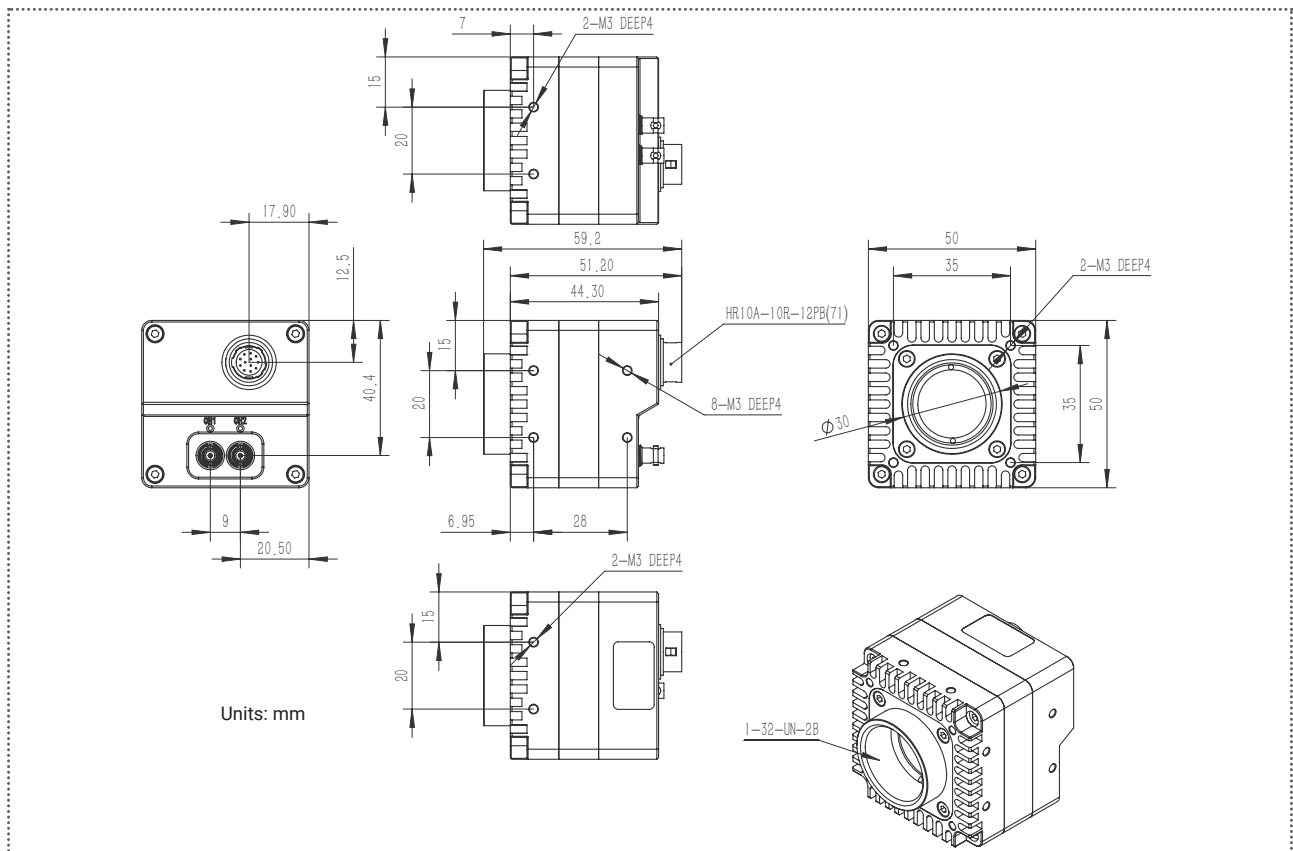
Model	MARS-810-190X2M-UV F02
Resolution	2848(H) × 2848(V)
Sensor	IMX487 Global shutter CMOS
Sensor Format	2/3"
Pixel Size	2.74μm × 2.74μm
Frame Rate	190fps
ADC	10 bit, 12 bit
Pixel Bit Depth	8 bit, 10 bit, 12 bit
Mono/Color	Mono, UV
Pixel Formats	Mono8 / Mono10 / Mono12
SNR	40.25 dB
Exposure Time	UltraShort: 1μs ~ 2.4μs, Actual Steps: 0.1 μs Standard: 3μs ~ 1s, Actual Steps: linetime
Gain	Digital gain: 0dB~16dB, Default: 0dB, Steps: 0.1dB Analog digital: 10bit:1×, 12bit: 1× ~ 12.19×, Default: 1×
Binning	2×2
Decimation	2×2
Synchronization	Hardware trigger, software trigger
Acquisition Mode	Single frame, Continuous, Software trigger, Hardware trigger, CXP trigger
Reverse X/Y	Reverse X/Y
I/O Interface	1 input and 1 output with opto-isolated, 1 bidirectional GPIO, 1 RS232
Data Interface	CXP-12 × 2(HD-BNC)
Power Supply	PoCXP
Power Consumption	5.3W @ PoCXP
Operating Temp.	0°C ~ +45°C
Storage Temp.	-20°C ~ +70°C
Operating Humidity	10% ~ 80%
Cooling	Passive Cooling, optional: Heat Dissipation Fins
Lens Mount	C
Filters / Transparent Glass	-
Dimensions	50mm × 50mm × 59.2mm
Weight	183 g
Software	DAHENG IMAGING or third-party frame grabbers supporting software
OS	Win7 / Win8 / Win10 / Win11
Conformity	CE, RoHS, FCC, ICES, UKCA, CoaXPress2.0, GenICam

I/O Interface



PIN	Definition	Description
1	Line 0+	Opto-isolated input +
2	GND	GPIO GND
3	Line 0-	Opto-isolated input -
4	POWER_IN	-
5	Line 2	GPIO input/output
6	RS232 Rx	RS232 receive
7	Line 1-	Opto-isolated output -
8	Line 1+	Opto-isolated output +
9	GND	GPIO GND
10	GND	GPIO GND
11	POWER_IN	Camera external power 24V±10%
12	RS232 Tx	RS232 transmit

Technical Drawing



China Daheng Group, Inc. Beijing Image Vision Technology Branch

12F Daheng Science & Technology Tower, No.3 Suzhou Street, Haidian District, Beijing China, 100080

Tel: +86 10 82828878

E-mail: isales@daheng-imaging.com