

## ME2P-034-491G3M-P-MS4-16P S00

### 3.4MP CMOS 2.5GigE Multispectral Camera



GEN*i*CAM



The ME2P-034-491G3M-P-MS4-16P S00 is a multispectral camera with Sony IMX990 CMOS sensor, pixel size 5 $\mu$ m and uses 2.5GigE interface for high-speed transmission of image data. The Camera support Power over Ethernet, integrated I/O interface and has locking screw connectors can secure the reliability of cameras deployed in harsh industrial environments.

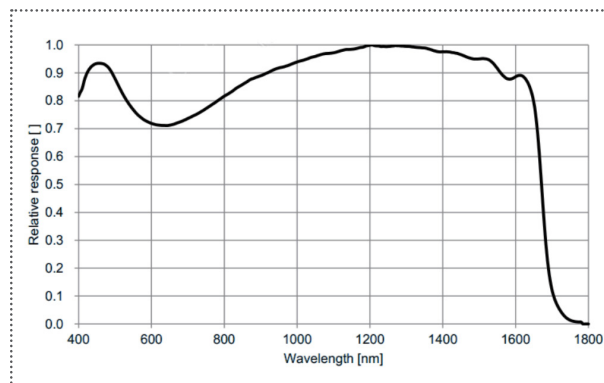
### Applications

Suitable for applications such as moisture measurement, semiconductor testing, plastic sorting and so on.

### Features

- Support Power Over Ethernet (PoE, IEEE802.3af compliant)
- Four bands of selectable output 1200nm/1300nm/1450nm/1600nm
- Four band ROIs can be set
- Exposure and gain programmable
- Encoder trigger acquisition and continuous acquisition
- Gamma, Sharpness, LUTs and User Set Control

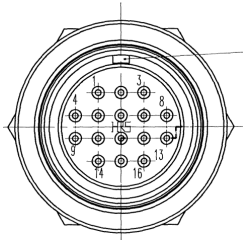
### Spectral Response



## Specifications

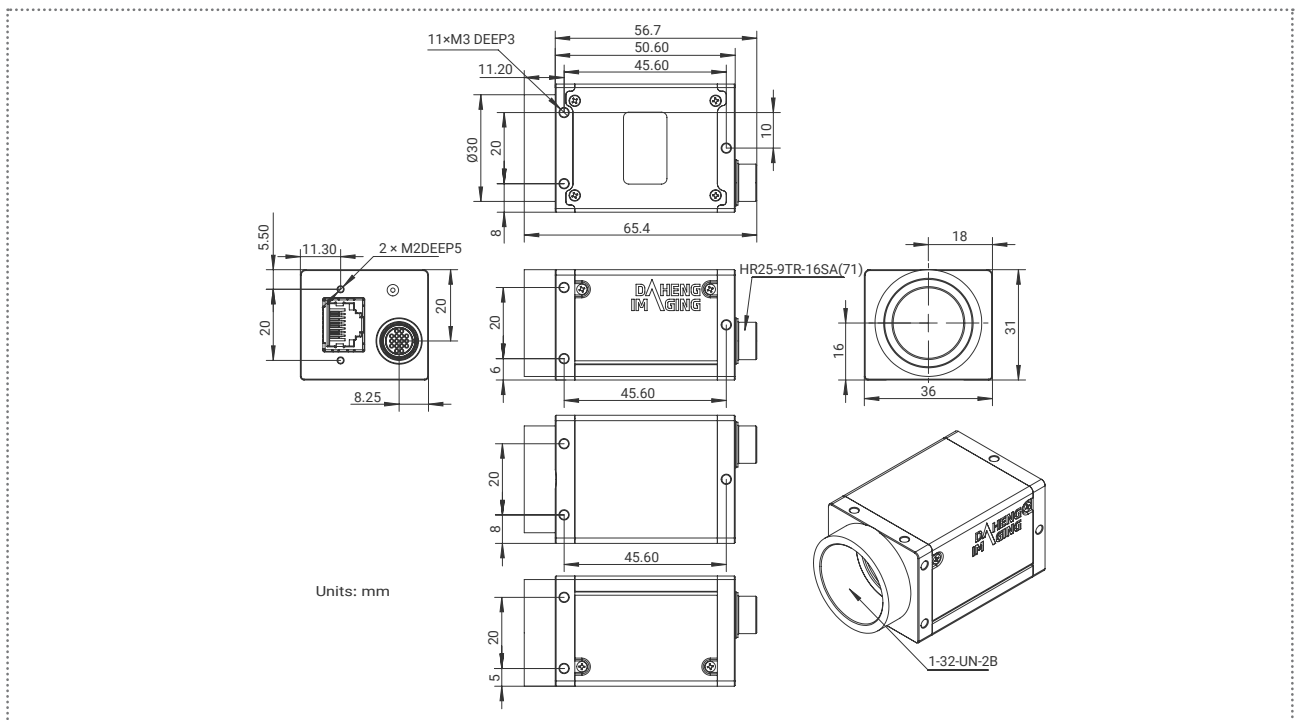
Model	ME2P-034-491G3M-P-MS4-16P S00	
Resolution	1280(H) × 256(V) (each band contains 64 lines)	
Sensor	Sony IMX990 Global shutter CMOS	
Sensor Format	1/2"	
Pixel Size	5μm × 5μm	
Frame Rate	8bit	491fps (4 bands), 630fps (3 bands), 875fps (2 bands)
	10bit	457fps (4 bands), 585fps (3 bands), 813fps (2 bands)
	12bit	261fps (4 bands), 334fps (3 bands), 465fps (2 bands)
ADC	8 bit, 10bit, 12 bit	
Pixel Bit Depth	8 bit, 10bit, 12 bit	
Wavelength Range	1200nm / 1300nm / 1450nm / 1600nm	
Pixel Formats	Mono8 / Mono10 / Mono12	
SNR	50.76 dB	
Exposure Time	UltraShort: 3μs~100μs, Actual Steps: 1μs Standard: 13μs~1s, Actual Steps: 1 row period	
Gain	0dB ~ 24dB, Default: 0dB, Steps: 0.1dB	
Synchronization	Hardware trigger, software trigger	
I/O Interface	2 differential encoder inputs, 1 input and 1 output with opto-isolated, 1 programmable GPIO	
Data Interface	2.5GigE	
Power Supply	PoE (Power over Ethernet, IEEE802.3af compliant) or 12VDC-10% ~ 24VDC+10%	
Typical Power	3.64 W @ 12 VDC, 4.36 W @ PoE	
Operating Temp.	0° C ~ +45° C	
Storage Temp.	-20° C ~ +70° C	
Operating Humidity	10% ~ 80%	
Lens Mount	C	
Filters / Transparent Glass	-	
Dimensions	36(W) × 31(H) × 50.6(L) mm (without lens adapter or connectors)	
Weight	87 g	
Software	3rd-party software such as HALCON, VisionPro and LabVIEW	
OS	32bit / 64bit Windows, Linux, Mac OS	
Conformity	CE, RoHS, FCC, ICES, UKCA, GigE Vision®, GenICam®	

I/O Interface



Pin	Definition	Description
1	GND_ signal	Camera signal GND
2	A-	Channel 1 differential signal negative terminal
3	A+	Channel 1 differential signal positive terminal
4	NC	NC
5	B-	Channel 2 differential signal negative terminal
6	B+	Channel 2 differential signal positive terminal
7	GND_ signal	Camera signal GND
8	Line2	GPIO input/output
9	NC	NC
10	GND_POWER	Camera power GND
11	Line1-	Opto-isolated input -
12	Line1+	Opto-isolated input +
13	NC	NC
14	Line0-	Opto-isolated input -
15	Line0+	Opto-isolated input +
16	POWER_IN	Camera external power, +12V DC~+24V DC

Technical Drawing



China Daheng Group, Inc. Beijing Image Vision Technology Branch

12F Daheng Science & Technology Tower, No.3 Suzhou Street, Haidian District, Beijing China, 100080

Tel: +86 10 82828878

E-mail: isales@daheng-imaging.com